



Rockdale

Rock'n Talk

December 18, 2025
8:30 AM



Thank you for joining us!

Our World Our Voice



**ROCKDALE VAPA MAGNET
2025-2026**

Technology Transition

2nd Semester

LAUSD Definition:

The practice of cultivating a positive, authentic digital footprint that can be leveraged for college and career success.



Los Angeles Unified School District
Student Graduate Profile

- We will be collecting all technology for the winter break.
- We will postpone our ST 50% goal to Friday, January 23, in the event your child does not have access to technology at home.
- If your child is attending the Winter Academy at Dahlia Heights, they will take their technology with them over the winter break.

Differentiated Digital Tools

Students should aim for **30-45 minutes** of "on-task" time in both **iReady Math** and **iReady Reading** each week, and at **least 60 minutes of ST Math.**

2nd Semester

Technology will remain at school during the second half of the school year.

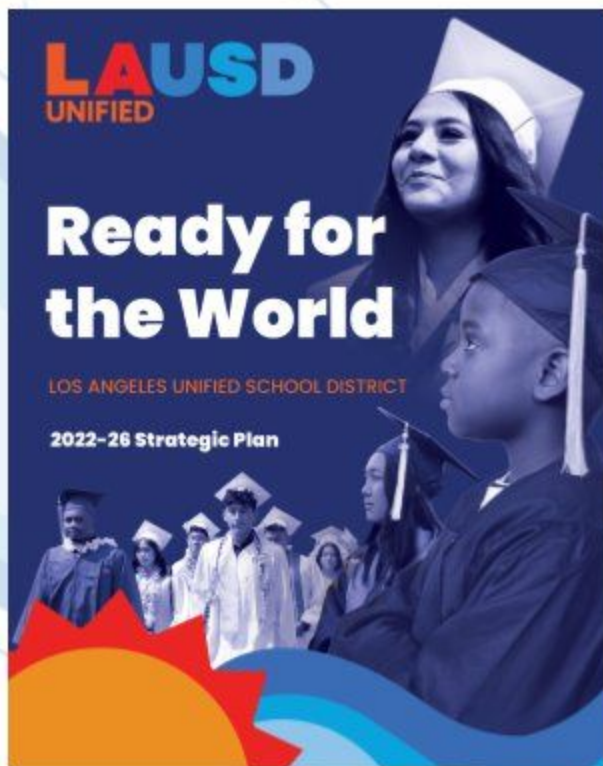
Budget 2026-2027

Key Goals and Implementation

School site budgets translate the District's mission and objectives into reality through specific programs and funding.

- **Strategic Alignment:** Funds are aligned with the LAUSD Strategic Plan goals, which include boosting college and career readiness, improving literacy and numeracy, and deepening socio-emotional learning.
- **Equity-Based Allocation:** A significant portion of the budget is distributed through formulas like the Student Equity Needs Index (SENI) and Targeted School Population (TSP), Prop 28, CAP directing more resources to schools with higher needs and working to close achievement gaps.
- **Local Prioritization :** Principals and school site councils (involving parents and staff) have a degree of autonomy over discretionary funds to pay for specific local needs such as classroom supplies, field trips, or additional support staff.

Connections to the Strategic Plan



Pillar 1: Academic Excellence

High-Quality Instruction

Enriching Experiences

Eliminating Opportunity Gaps

College and Career Readiness

Pillar 2: Joy and Wellness

Welcoming Learning Environments

Whole-Child Well-Being

Strong Social-Emotional Skills

Outstanding Attendance

Pillar 3: Engagement and Collaboration

Strong Relationships

Accessible Information

Leading for Impact

Honoring Perspectives

Pillar 4: Operational Effectiveness

Data-Driven Decision-Making

Modernizing Infrastructure

Sustainable Budgeting

District of Choice

Pillar 5: Investing in Staff

Diverse Workforce

Professional Learning

Staff Wellness

High Performance Standards

LAUSD Budget Transparency

<https://budgettransparency.lausd.net/budget-tracker>

The District Provides the Following*

- Principal
- Magnet Coordinator (Magnet)
- AP-EIS, (limited)
- Office Tech
- School Administrative Assistant
- Psychologists for SpEd (limited)
- Resources Specialist Teacher (SpEd)
- Classroom Teachers
- 2 3-hour campus aides
- Instructional Aides UTK Classrooms
- Full-time Library Aide
- 5-day Nurse
- Plant Manager
- Buildings and Ground Worker
- Cafeteria Manager
- Cafeteria Staff
- CORE Textbooks & Digital Resources
- Maintenance Supplies (limited)
- General supplies (limited)
- Supplemental Instructional materials (limited)

- **Rockdale must allocate discretionary funds for all other resources.**
- **The PTA may elect to fund additional resources.**

Budget Number	Budget Name	Allocation	Items	Cost
7S046	Title 1	\$ 64,609	<ul style="list-style-type: none"> • ½ day Psych • 1 day PSW • 16 days of Teacher Release (\$615.61 per day) • SIM 	\$17,263 \$34,524 \$ 9,850 \$ 2,999
7E046	Title 1: Parent Engagement	\$ 796	<ul style="list-style-type: none"> • SIM 	\$ 796
10552	TSP	\$ 151, 850		
10947	TSP Academic Excellence		<ul style="list-style-type: none"> • 4 -IAs (3 hours) <ul style="list-style-type: none"> ○ Positions 14,757 x 4 ○ PERS Classified (\$3709) ○ Soc. Sec. \$855 ○ PARS -\$517 per \$16,188 	\$59,028 \$14,836 \$ 3,420 \$ 2,068 \$75,216.00 (Total for AE)
10948	TSP Joy & Wellness		<ul style="list-style-type: none"> • 3 3-hour Supervision Aides <ul style="list-style-type: none"> ○ Positions 14,757 x 3 ○ PERS Benefits Classified (\$3,709) ○ Soc. Sec. \$855 ○ PARS -\$517 per 	\$ 44,271 \$11, 127 \$ 2,565 -\$ 1,551 \$56,412 (Total for J&W)

10949	TSP Engagement & Collaboration		<ul style="list-style-type: none"> • Community Rep (3 hours x 5 days) • Community Rep X Time (12 hours) • Clerical Overtime (81.21 x 8 hours) • Teacher X Time (12 hours @ 102) • Campus Aide X time (12 hours @ 33.04) • Instructional Aide X Time (12 hours @ 30.73) • M&O Supplies • IMA 	\$14,757 \$ 369 \$ 650 \$ 1,231 \$ 397 \$ 369 \$ 449 \$ 2,000 \$20,222 (Total E&C)
14154	Magnet	\$ 5,372	<ul style="list-style-type: none"> • 20 hours Coordinator X-Time • Professional Contract (Assembly) • Supplemental Instructional Materials 	\$2,200 \$2,800 \$ 372
10424	TSP-Itinerant Arts Teacher Support	\$ 90,017	<ul style="list-style-type: none"> • 3 Arts Teachers 	\$90,017
11421	Prop 28 Arts Program	\$ 57,413	<ul style="list-style-type: none"> • Arts Teacher • Assemblies (Professional Contracts) • Buses (3) • Teacher X Time • IMA 	\$30,006 \$ 5,000 \$ 3,000 \$15,924 \$ 3,483
17703	Cultural Arts Passport	\$ 61750	<ul style="list-style-type: none"> • IMA • General Supplies • Admin X-time • Coordinator X-Time • Custodial X-Time • Clerical X-Time • Teacher X-Time • Curricular Trips • Admissions • Campus Aide Time • Professional Services (Sustainable Fashion & Assemblies) • IA 	\$11,520 \$ 2,000 \$ 2,840 \$12,536 \$ 1,600 \$ 2,200 \$16,454 \$ 2,500 \$ 2,500 \$ 300 \$ 7,000 \$ 300

12817	SpEd School Allocation	\$ 470	<ul style="list-style-type: none"> ● 1 sub day 	470
13027	General Fund (Lib Aide)	\$ 36,928	<ul style="list-style-type: none"> ● Toshiba (½) ● Supervision Aide 14,757 <ul style="list-style-type: none"> ○ PERS Classified (\$3709) ○ Soc. Sec. \$855 ○ PARS -\$517 ● General Supplies Technology (Charging stations & Chromebooks) ● M&O OT ● IMA ● General Supplies (Emergency Supplies) ● Curricular Trips ● Admin X-Time ● Clerical X-Time ● M&O Supplies 	3,750 18,804 14,757 3,709 855 -517 3,874 2,000 8,188 6,872 2,000 1,000 500 5,060

E-CAST for 2026-2027

14 Classes

-1

**Discussion/
Questions?**

Rockdale PTA





Dahlia Heights Elementary

January 2026

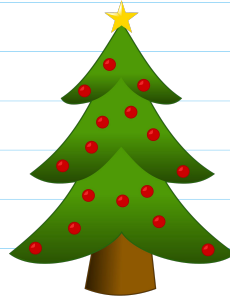
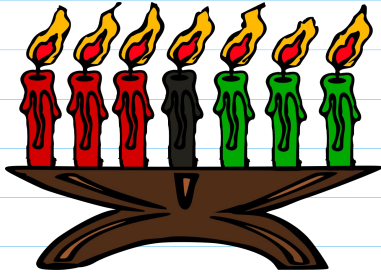
January 12	<ul style="list-style-type: none">• Second Semester-Classes-Resume• LA Opera Begins with 4th Grade
January 15	<ul style="list-style-type: none">• Rock'n Talk with Principal & PSW --De-Escalation Strategies --(ZOOM)
January 19	Martin Luther King, Jr. Day (School Closed)
January 21	PTA Meeting @ 6:00 PM
January 27	Reflections Celebration 6:00 PM
January 28-30	6th Grade Goes to ASTRO CAMP

**1
Day**

Winter Break

December 22-January 9

ENJOY THE SEASON!



Thank you!
YOU ROCK!